

# Xpert® BCR-ABL Ultra p190

*For Research Use Only (RUO)*



For research use only. Not for use in diagnostic procedures.

 **Cepheid®**  
A better way.



## The Need

Current testing options for BCR-ABL p190 are not only cumbersome, but also expensive and time consuming for the lab to implement because:

- Available testing methods are complex and create inefficient laboratory workflows.
- No international scale has been established for p190 monitoring, so laboratories are dependent on ratios and must run laborious standard curves.



## The Solution

Leveraging Cepheid's **lab in a cartridge™** technology, the Xpert BCR-ABL Ultra p190 assay decreases workflow complexity and hands-on time by automating the entire testing process, delivering faster results.

Xpert BCR-ABL Ultra p190 is a quantitative assay for the BCR-ABL minor breakpoint (p190) transcripts that provides high assay sensitivity, standardization, and on-demand molecular results in about 2.5 hours. With minimal hands-on time and a streamlined workflow, Xpert BCR-ABL Ultra p190 eliminates the need for time consuming hands-on processes and enables researchers to run p190 testing in-house.

### Easy to Use

- < 2.5 hours total testing process
- Simply add treated blood sample and an off-board reagent to the Xpert® cartridge

### Robust Design

- Includes two internal controls
- 4 mL input volume of whole blood supports high assay sensitivity for detection of low-level transcripts



## The Impact

- **Clinical Researcher:** Same day information
- **Laboratory:** Flexibility and simplicity for a more streamlined workflow

### Move your lab forward

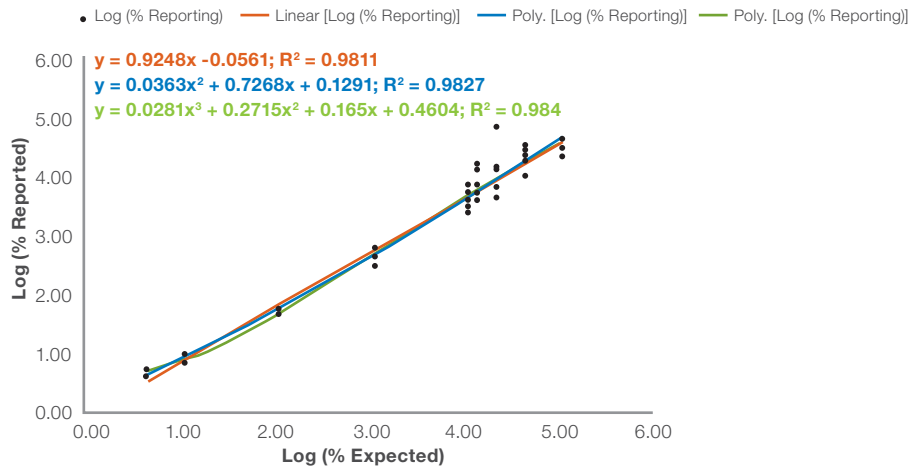
- **Decrease costs:** Eliminate need for standard curve and replicate testing
- **Optimize lab organization:** Free up technician time for other lab activities
- **Provide flexibility:** Process any number of samples, any day of the week, with a fixed cost per sample
- **Simplify reporting:** Deliver information on concise one-page report

---

## Technical Performance

Assay linearity was evaluated by serially diluting total RNA isolated from SUP-B15 (e1a2) cell line in a background lysate prepared from normal EDTA peripheral blood samples to target 9 different levels ranging between ~25% to 0.001% BCR-ABL p190/ABL. The estimated analytical LoD of the assay is 0.0060% BCR-ABL p190/ABL.

### Linear Regression Curves for Breakpoint Transcript e1a2





## Workflow:

# 3 Easy Steps

1

Transfer the wash reagent into chamber



2

Pipette entire contents of prepared sample (~4.5mL) into the sample chamber



3

Insert cartridge and start test



## CATALOG INFORMATION

Xpert® BCR-ABL Ultra p190

10 tests

RBCRABLP190-10

### References:

Xpert BCR-ABL Ultra p190 Package Insert 302-3770 Rev A

#### CORPORATE HEADQUARTERS

904 Caribbean Drive  
Sunnyvale, CA 94089 USA

TOLL FREE +1.888.336.2743  
PHONE +1.408.541.4191  
FAX +1.408.541.4192

#### EUROPEAN HEADQUARTERS

Vira Soleih  
81470 Maurens-Scopont France

PHONE +33.563.82.53.00  
FAX +33.563.82.53.01  
EMAIL [cepheid@cepheideurope.fr](mailto:cepheid@cepheideurope.fr)

[www.Cepheid.com](http://www.Cepheid.com)

© 2022 Cepheid 0823-03